



Welcome to the 2011 Colorado Mini Classic!
June 4 & 5, 2011 * Silt, Colorado

The 2011 Colorado Mini Classic is a three stage omnium consisting of a time trial, criterium and road race. The Classis has been specially designed for junior racers age 10 to 18, and places the focus on juniors and their families. We hope you enjoy your weekend in the great community of Silt, Colorado.

Thank you for joining us!

Presented by Two Rivers Cycling and the American Cycling Association

Staff

Promoter: Bill Sommers, Two Rivers Cycling – 970-309-1514
Promoter: Chris McGee, ACA Executive Director – 303-885-1603
Awards: Bruce Whitesel, ACA Junior Development Coordinator – 303-489-7437
Timing/Results: Al MacDonald, AGR Technologies
EMT: tbd

Officials

Chief Referee: Kim Viner
Chief Judge: Lynn Taylor
Asst Referee: tbd
Asst Judge: tbd
Chief Motor: Earl Walker

Special Thanks

A1 Traffic Control
Alpine Bank
Burning Mountain Fire Protection District
Colorado Mountain College
Garfield County Sherriff's Department
Holiday Inn Express, Silt, CO
Town of Silt, CO

Colorado Mini Classic Technical Guide (con't)

Registration: Registration is only available online at <https://miniclassic.signup365.com/> Fee for all racers is \$50 for the Omnium. This includes all charges.

All racers must be annual ACA members (\$15 per year). This membership is available at www.americancycling.org.

Registration cut-off will be Thursday June 2nd at 11:59 AM. NO DAY OF RACE REGISTRATION.

No refunds will be issued unless the entire race (all three stages) is cancelled by the Chief Referee.

Packet Pickup: Packet pickup (including race numbers and Racer's Technical Guide).

Friday, June 3rd from 4pm-7pm – Holiday Inn Express

Saturday, June 4th from 7am-8am – Holiday Inn Express

Saturday, June 4th from 11:30-Noon – Criterium Start/Finish

Sunday, June 5th from 7:30am-8:00am – Road Race Start/Finish

Categories Offered:

JM 10-12

JW 10-12

JM 13-14

JW 13-14

JM 15-16

JW 15-16

JM 17-18

JW 17-18

Minimum Field Size:

Fields of 10 or less riders *may* be combined at the discretion of the Chief Referee, promoter and registered riders. Combined fields will compete for the same prize list but be awarded separate BAR/BAT points.

Results: Results will be posted at the following locations:

Time Trial: Back Patio of the Holiday Inn Express

Criterium: Start/Finish, and Back Patio of the Holiday Inn Express

Road Race: Start/Finish

Riders will have 15 minutes from posting of results to protest stage results.

Colorado Mini Classic Technical Guide (con't)

Overall Results: The 2011 Mini Classic is an Omnium, meaning that overall General Classification (GC) will be determined by POINTS, not time. Points will be earned on a linear scale starting at 75 and decreasing 1 point per place.

- All stages have equal points for all categories.
- Any riders pulled from a stage will be given a finishing place.
- All ties will be broken or resolved by final stage placing.
- Two points primes will be available in each category in the criterium, except 10-12 who will have one points prime. Points are 3, 2 and 1 points for the first three riders across the line on designated laps.
- Racers who do not finish a stage can start and be scored in all subsequent stages

Awards: Stage awards (certificates) will be given out to the top 3 in each stage just prior to the start of the following stage. Parents, please be ready to receive these awards before the race begins. Stage awards will be available from Bruce Whitesel during the weekend.

General Classification awards (trophies and medals) will be given out after the final stage at the band shell in Veterans Park (near the criterium and road race Start/Finish).

Numbers: Numbers will be distributed at packet pickup. All racers will receive two numbers, and both numbers must be used for all three stages. No folding, crumpling or modified numbers. Numbers must be clearly visible to both sides of the road. Please be careful that nothing covers the numbers (hair, jacket, etc). If you have questions about number placement, please ask an official before your race starts.

Sign In: All Racers MUST sign in at least 15 minutes before the criterium and road race. (There is no sign-in for the time trial). Sign-in will be near the Start/Finish for each venue and closes 15 minutes before each race.

Rules: ACA Rules will be enforced, with several variances outlined in this Technical Guide.

Litter: DO NOT LITTER, including BOTTLES– PENALTIES APPLY!!! The Feed Zone in the road race is the only legal Discard Zone for the entire omnium (You may not discard anything in any other race).

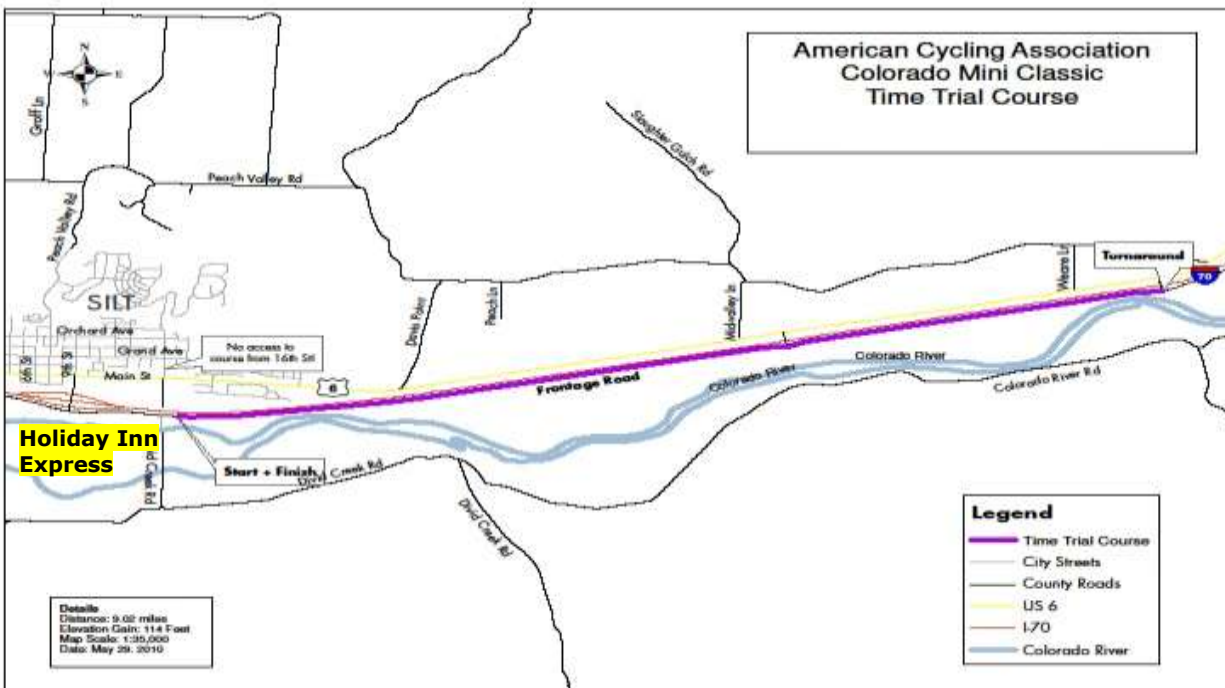
Medical: Medical personnel will be located at the Start/Finish of each stage. Please contact a race staff member or official if you need medical attention.

Saturday Social: On Saturday evening, Two Rivers Cycling will host a racer/family social at the Holiday Inn Express in Silt. The event will start at 6:30 and wrap up around 8. Please come and share stories about a great day of racing on the banks of the Colorado River. More details to be announced at Saturday's races.

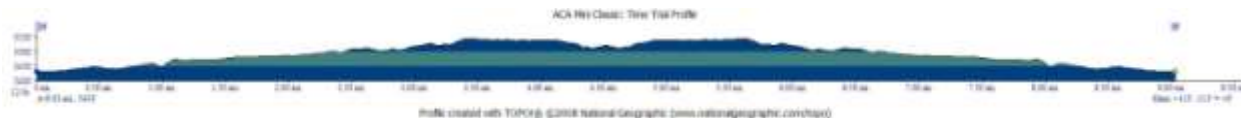
Racer Consideration: *The race is very lucky to have a host community that welcomes this event* and the race organizers would like to keep it that way. Please be considerate of the residents of Silt and your fellow racers. Please be considerate of other guests at the Host Hotel: no running or loud voices in the halls, no slamming doors, no warming up in the Hotel. If filling your car's tank or eating at a restaurant, please consider services in Silt. **DO NOT urinate in public.** Avoid changing clothes in public. Keep in mind these actions are considered unsportsmanlike conduct and may subject riders to disqualification from the event.

Colorado Mini Classic Technical Guide (con't)

Course Map: Long TT



Long TT Profile



Special TT Notes:

No wheel support allowed.

Time trial bikes and equipment are allowed.

NO WARMING UP ON THE COURSE DURING RACES. Riders may preview the course so long as they are OFF the course BEFORE the first racer starts at 8am.

ONLY DESIGNATED RACE VEHICLES will be allowed to follow riders. No supporters on bicycles will be allowed, and supported riders may be disqualified from the event.

Riders who suffer a mechanical or accident will be given a placing by the Chief Judge and allowed to start the subsequent stages.

Colorado Mini Classic Technical Guide (con't)

STAGE 2 –Saturday Criterium -12 Noon – 6:00 pm – June 4, 2011

Course Description:

A great new course for the Mini Classic, the Criterium winds around two Silt city parks. The Criterium uses the same Start/Finish as the Road Race. The parks are grassy and shady, and have playground equipment for families. The 6-corner course is 0.6 miles (1 km) long.

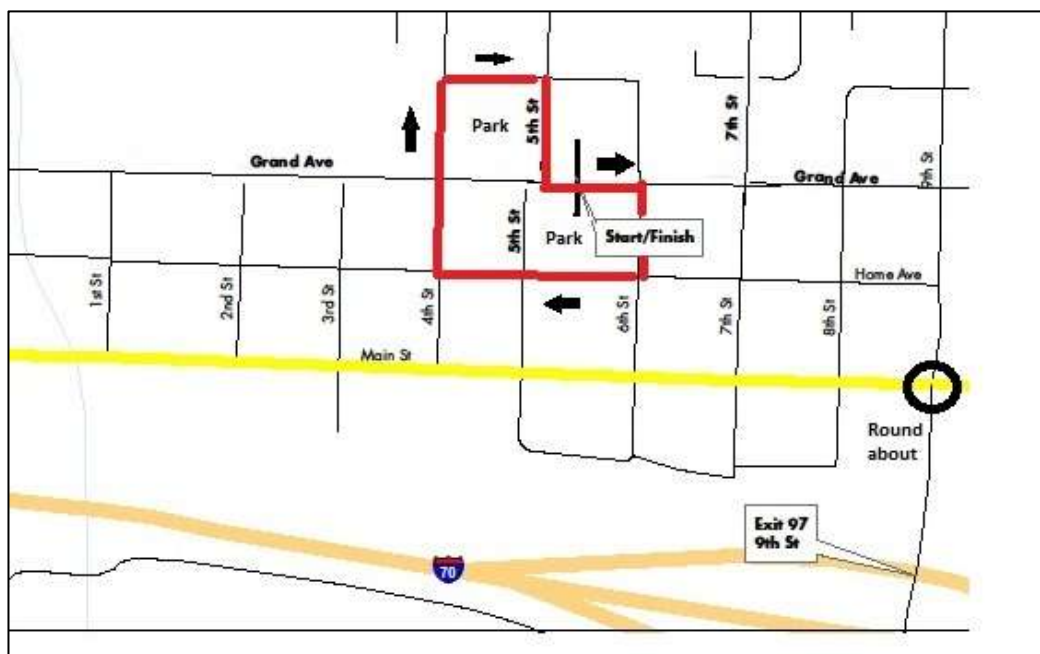
Directions:

From the Holiday Inn Express, go west on the Frontage Road, turn right on 9th St and proceed over I-70. Turn left (west) at traffic circle on US 6 (Main St.). Proceed west to 5th street, turn right and travel 1 block to the race course.

Parking:

Parking is available at the Holiday Inn Express and on streets south of the race course.

Course Map:



Colorado Mini Classic Technical Guide (con't)

Criterion Schedule of Events:

Category	Start time	Length
JW 10-12	12:00 PM	0:20
JM 10-12	12:30 PM	0:20
JW 13-14	1:00 PM	0:30
JM 13-14	1:40 PM	0:30
Break – Kids Race		
JW 15-16	2:30 PM	0:40
JM 15-16	3:20 PM	0:40
JW 17-18	4:10 PM	0:45
JM 17-18	5:00 PM	0:45

Points Primes:

There will be two points primes in each category, except 10-12 who will have only one prime. Primes will be for the first 3 racers crossing the line on the prime lap, designated by a bell and will be worth 3, 2, and 1 points respectively.

Special Notes:

Racers must Sign-In before the Criterion. Sign-In will be located near the Start/Finish of the Criterion and closes 15 minutes prior to each race.

NO WARMING UP ON THE COURSE DURING RACES. Riders may be permitted to preview the course between categories at the discretion of the Chief Referee. Lapped riders may be pulled at the discretion of the Chief Referee and given a finish placing corresponding to their place when pulled from the race.

Free laps will be awarded in the Criterion according to the following schedule:

10-12 – free lap until 3 laps to go

All other categories – as published in 2011 ACA Rulebook.

Colorado Mini Classic Technical Guide (con't)

STAGE 3 – Sunday Road Race - 8 AM to 2 PM – June 5, 2011

Staging note: Riders must sign-in and stage 15 minutes prior to the start of the road race. There will be a designated sign-in and staging area, on 5th Street just south of the race course.

Directions:

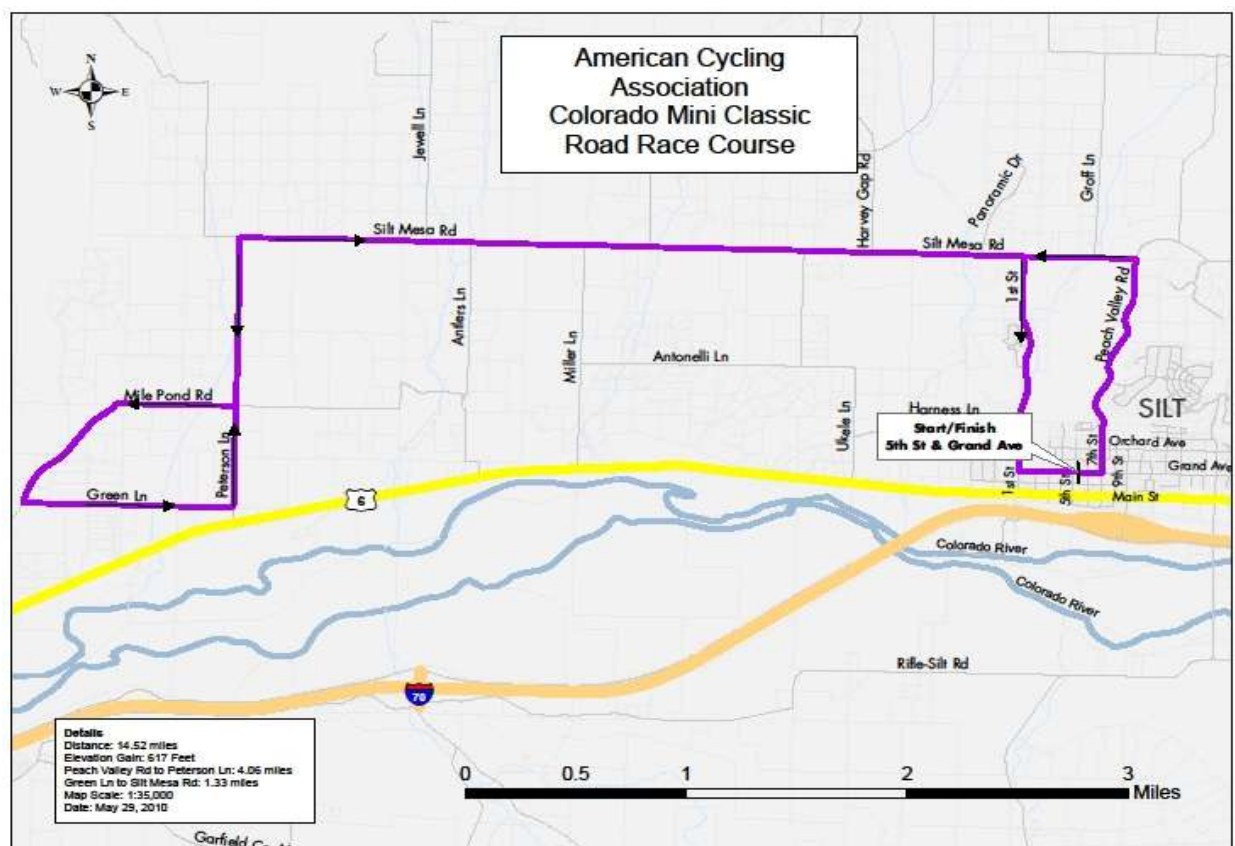
From the Holiday Inn Express, go west on Frontage Road, turn right on 9th St and proceed over I-70. Turn left (west) at traffic circle on US 6 (Main St.). Proceed west to 5th street, turn right and travel 1 block to the race course. (Same as Criterium)

Parking: Parking is available at the Holiday Inn Express and on streets south of the race course.

Course Description:

An amazing road race course! It all starts with an extended climb up Peach Valley Road. At the summit, riders turn left and head across the “rollercoaster” on Silt Mesa Road before turning south to the fun and fast Mile Pond Loop. Riders then slowly climb back to the rollers of Silt Mesa Road before a thundering descent back into downtown Silt for the finish.

CENTERLINE RULE WILL BE STRICTLY ENFORCED AT ALL TIMES.

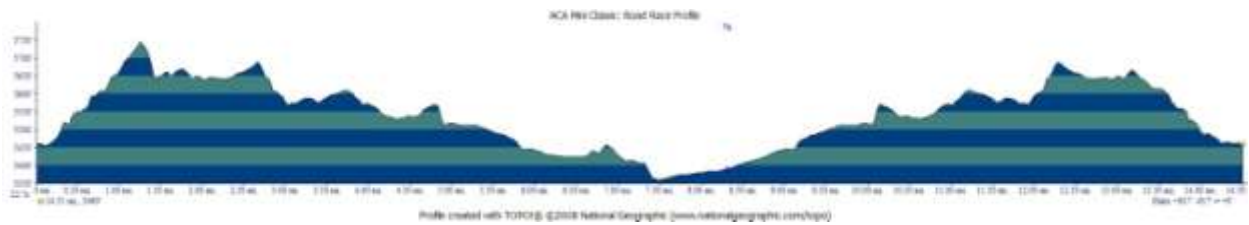


Colorado Mini Classic Technical Guide (con't)

Detail of Road Race Start/Finish in Town of Silt:



Profile: Road Race



Colorado Mini Classic Technical Guide (con't)

Schedule of Road Race:

Category	Start	Laps	Miles
JM 13-14	8:00 AM	1	14
JW 13-14	8:02 AM	1	14
JM 10-12	8:10 AM	1	14
JW 10-12	8:12 AM	1	14
JM 17-18	10:00 AM	3	42
JW 17-18	10:02 AM	3	42
JM 15-16	10:50 AM	2	28
JW 15-16	10:52 AM	2	28

Special Notes:

Riders must stage and sign-in 15 minutes prior to the start of the road race. There will be a designated staging area near the Start/Finish. Sign-In will be located here.

Wheel Support will be based on available volunteer support. Wheels in/Wheels out unless more than 50% of the field supplies wheels. If more than 50% of the field supplies wheels, the support will be neutral.

The Feed Zone will be clearly marked and located on the right side of the road near 7th and Orchard. VERY limited neutral feeds will be available; please consider contributing bottles/feeders to the neutral feed support. This feed zone is also the only legal discard zone for trash and bottles. All other discards are considered littering and will be treated accordingly.

ONLY DESIGNATED RACE VEHICLES will be allowed to follow riders. No other support vehicles are permitted. This includes support vehicles on bicycles. Supported riders may be disqualified from the event.

Riders out of contention *may* be pulled at the discretion of the Chief Referee and given a finish placing corresponding to their place when pulled from the race.

Colorado Mini Classic Technical Guide (con't)

Appendix A – Guidelines for Penalties

Offense	Penalty
Dangerous riding, holding onto or being pushed by a motor vehicle or other rider for a long time, not covering the required course and crossing the finish line for a place	Disqualification
Grossly unsportsmanlike conduct, rider not allowing an official car to pass	1 st offense disqualification and possible suspension
Reporting to the start line with illegal clothing or equipment	1 st offense not allowed to start
Rider not holding his line in an intermediate sprint	1 st offense relegation and 1 point relegation; 2 nd offense relegation and 2 points relegation; 3 rd offense disqualification
Rider not holding his line in the final sprint	1 st offense relegation and 2 points relegation 2 nd offense relegation and 4 points relegation 3 rd offense disqualification
Failure to sign in when sign-in is required, signing in for another rider, failure to wear a required jersey (i.e. leader's jersey), racing with modified numbers	1 st offense - 1 point 2 nd offense -2 points 3 rd offense- 4 points
Drafting a vehicle for a short distance (less than 100 meters) in a mass start event	1 st offense- Warning 2 nd offense-1 point 3 rd offense-2 points 4 th offense-4 points 5 th offense-disqualification
Drafting a vehicle for a long distance (more than 100 meters) in mass start event	1 st offense-penalty of at least 2 points 2 nd offense-disqualification
Offense	Penalty
Repeated pushing by team personnel	1 st offense-4 points 2 nd offense-10 points 3 rd offense-disqualification
Repeated pushes from bystanders	1 st offense- warning 2 nd offense-1 point 3 rd offense- 2 points 4 th offense- 5 points 5 th offense-disqualification
Pushing between riders	1 st offense-1 point 2 nd offense-2 points 3 rd offense-5 points 4 th offense-10 points 5 th offense-disqualification During final kilometer before a sprint-above penalties doubled and rider placed last in the group
Pushing off from a vehicle or another rider.	1 st offense-1 point 2 nd offense-2 points 3 rd offense-5 points 4 th offense-10 points 5 th offense-disqualification

Colorado Mini Classic Technical Guide (con't)

Failure to obey centerline rule	Relegation or Disqualification determined by Chief Referee and announced to the riders before the start of the race.
Not following service rules	1 st offense-warning 2 nd offense-1 point 3 rd offense-2 points 4 th offense - (disqualification), support vehicle removed from caravan
Throwing dangerous object on the road	1 st offense-Disqualification
Discarding water bottles, food wrappers or other litter outside of designated feed zones and bottle discard areas	1 st offense-1 point 2 nd offense-2 points 3 rd offense disqualification
Dangerous or illegal equipment	1 st offense-not allowed to start if before the event 2 nd offense-4 points 3 rd offense-disqualification
Feeding outside designated feed zones	1 st offense -warning 2 nd offense -1 point penalty 3 rd offense -2 points penalty 4 th offense – disqualification
Riders on different laps or different races working together, or lapped riders interfering with a sprint. (18.1.16 and 18.3.3)	1 st offense – Disqualification
TT DRAFTING PENALTIES	1 st offense (notification by referee on course) – warning 2 nd offense – 1 point penalty 3 rd offense – 2 point penalty

Thank you for being part of the 2011 Colorado Mini Classic!