

Weld County Road Race

New Course!

Presented by
Rally Sport Cycling Team



Johnstown, Colorado

Saturday, 4/20/2013

Online Pre-Registration Only! www.CyclingEvents.com/WeldCountyRR - Registration Closes – Thursday 4/18 at Midnight

New Course for 2013: A 12.8 mile loop on rolling paved roads except for one mile of straight dirt road. Sag wagon only, no mechanical support. Bring stuff to fix a flat.

Registration: On-line registration only at <http://www.cyclingevents.com/WeldCountyRR> until April 18th at midnight. **NO Race Day**

Registration! USAC insurance, BRAC surcharges and online registration fees are included in entry fee. Number pick up located at Pioneer Ridge Elementary School (see map). USAC license required. USAC 1-Day license is \$10, only available on site for Cat 5 Men, Cat 4 Women. BRAC annual membership recommended to avoid BRAC 1-Day membership (\$5) on race day. (BRAC 1-Day membership exempt with USAC 1-Day). Annual USAC licenses and BRAC memberships available online at www.usacycling.org. **No refunds. Race For Free - Volunteer half day or provide a Volunteer while you are racing.** Email RoadRace@CyclingEvents.com at least one week in advance for more info. Juniors race for \$10 in junior categories (must have USAC license)! **U23 racers get \$15 off entry fee!** Results will be posted at registration area and not the finish line.

Rules: All USAC rules apply. **Centerline Rule will be strictly enforced! Stay to the right or stay home!** If no painted centerline marking exists, riders must keep to the right side, leaving a clear passing lane to their left at all times, regardless of weather or road conditions. All roads are open to traffic. **Obey and respect all police officer, officials, and volunteer requests.** Prizes must be claimed the day of race. USAC release waiver must be signed by all racers or parent/guardian for anyone 18 years or younger. Gear restrictions apply to all juniors (10-18). See USAC Rule 114. Bike restrictions apply to juniors 14 and under. See USAC Rule 115. **HELMETS REQUIRED.** Race will only be cancelled due to weather conditions that may be dangerous to riders.

Category	Start Time	Laps	Length (miles)	Prizes/Places	Field Limit	Fee
SM 4	8:45 am	3	38	Merch./3	80	\$40
SM 45+ _4	8:49 am	3	38	Merch./3	80	\$40
SM 55+/65+	8:53 am	3	38	Merch./3 each	80	\$40
SW 4/55+	8:56 am	2	25	Medals/3 each	80	\$40
JM/JW 17-18	10:45 am	2	25	Medals/3 each	40	\$10
JM/JW 15-16	10:47 am	2	25	Medals/3 each	40	\$10
JM/JW 13-14	10:49 am	1	12	Medals/3 each	40	\$10
JM/JW 10-12	10:51 am	1	12	Medals/3 each	40	\$10
SM 35+ _3	12:10 pm	4	50	Merch./3	80	\$40
SW P-1-2/35+	12:12 pm	4	50	\$200/5, Merch./3	80	\$40
SM 35+ _4	12:16 pm	3	38	Merch./3	80	\$40
SM 5	12:19 pm	3	38	Medals/3	50	\$40
SW 3/45+	12:21 pm	3	38	Merch./3 each	80	\$40
SM Pro-1-2	2:40 pm	5	63	\$250+Merch./5	80	\$40
SM 35+ _1-2	2:43 pm	5	63	Merch./3	80	\$40
SM 3	2:46 pm	4	50	Merch./3	80	\$40
SM 45+ _1-2-3	2:49 pm	4	50	Merch./3	80	\$40



Bicycle Racing Association of Colorado

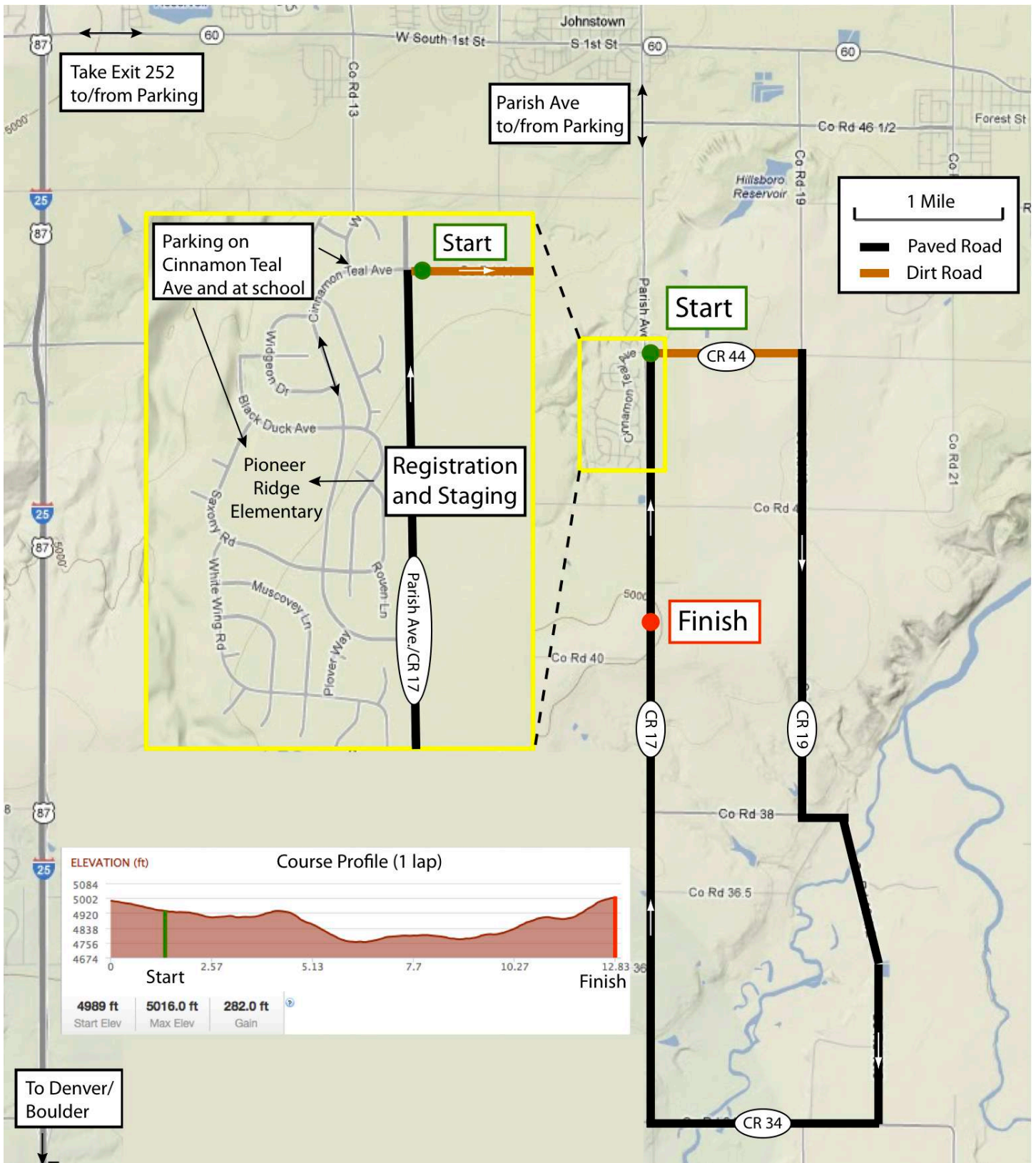


Thanks to our Sponsors

Rhonda Mansell
Certified MAT Specialist
720-883-4901 Rhonda@MatJournal.com

BOULDER PLASTIC SURGERY
WINFIELD HARTLEY, MD
HANS KUISLE, MD

ReBoulderCO.com
ART SCHWADRON | REAL ESTATE | REMIX of Boulder inc.



Directions to Parking: Take exit 252 off I-25 and follow Hwy 60/W South 1st St. east to town of Johnstown. Turn south on Parish Ave./County Road 17 and then west on Cinnamon Teal Ave. Parking will be at Pioneer Ridge Elementary School and on Cinnamon Teal Ave. (see map). No alcohol or tobacco on school grounds.

For more information, contact Eric Ray or Stephen Haydel at RoadRace@CyclingEvents.com