

CLASICA DE RIO GRANDE

(formerly known as Weld County Road Race)

PRESENTED BY

RallySport
Cycling Team

& **RIO GRANDE** &
MEXICAN ★ RESTAURANT

Team Rio
Grande Racing



Longer Course!
Longer Races!
Burritos!

Johnstown, Colorado

Saturday, 7/11/2015

Online Pre-Registration Only! www.CyclingEvents.com/RioRR - Registration Closes - Friday 7/10 at Noon

Longer Course for 2015

An expanded **17.5 mile loop** on rolling paved roads except for one mile of straight dirt road. Sag wagon only, no mechanical support. Bring stuff to fix a flat.

Rio Grande Mexican food truck will be at Registration/Start area! Lots of Rio prize GCs!

Registration

- **On-line registration only** at <http://www.cyclingevents.com/RioRR> until July 10th at noon. **NO Race Day Registration!** USAC insurance, LA Operational surcharges and online registration fees are included in entry fee. Number pick up located at Pioneer Ridge Elementary School (see map).

- **USAC license required.** USAC 1-Day license is \$15, only available on site for Cat 5 men, Cat 4 women and juniors who have never had a USAC license with a higher category. Can **only** be purchased online at www.usacycling.org/events/?state=CO, select appropriate event, then click on Purchase One-Day License. Bring receipt to race.

- **BRAC annual membership recommended** to avoid BRAC 1-Day membership (\$5) on race day. (BRAC 1-Day membership exempt with USAC 1-Day). Annual USAC licenses and BRAC memberships available online at www.usacycling.org. **No refunds.**

- Juniors race for \$15 in junior categories (must have USAC license)! **U23 racers get \$15 off entry fee!** Results will be posted at registration area and not the finish line.

| Category | Start Time | Laps | Length (miles) | Prizes/Places | Field Limit | Fee |
|---------------------|------------|------|----------------|-------------------|-------------|------|
| MM 50+ 1-2-3 | 9:00 am | 3 | 52.5 | Merch/3 + \$40* | 80 | \$42 |
| MM 40+ 4 | 9:04 am | 3 | 52.5 | Merch/3 | 80 | \$42 |
| MM 50+ 4 | 9:08 am | 3 | 52.5 | Merch/3 | 80 | \$42 |
| SM 5 (<40) | 9:12 am | 2 | 35 | Medals/3 | 50 | \$42 |
| SM 5 (40+) | 9:16 am | 2 | 35 | Medals/3 | 50 | \$42 |
| JM/JW 15-16 / 17-18 | 9:20 am | 2 | 35 | Medals/3 each | 40 | \$15 |
| MM 60+/70+ | 9:24 am | 2 | 35 | Merch/3 each | 80 | \$42 |
| SM Pro-1-2 | 12:00 pm | 4 | 70 | \$700/10 + \$80* | 80 | \$42 |
| MM 40+ 1-2-3 | 12:04 pm | 4 | 70 | \$200/3 + \$50* | 80 | \$42 |
| SM 3 | 12:08 pm | 3 | 52.5 | \$150/3 + \$40* | 80 | \$42 |
| MM 40+ 3 | 12:12 pm | 3 | 52.5 | \$150/3 + \$40* | 80 | \$42 |
| SW Pro-1-2 | 12:16 pm | 3 | 52.5 | \$250/5 + \$50* | 80 | \$42 |
| SM 4 | 12:20 pm | 3 | 52.5 | Merch/3 | 80 | \$42 |
| SW 3/MW 40+ | 12:22 pm | 3 | 52.5 | Merch/3,Merch/3 | 80 | \$42 |
| SW 4/MW 50+/MW 60+ | 12:26 pm | 2 | 35 | Medals/3 for each | 60 | \$42 |

*For select categories the top 3 across the finish line each lap, including the finish lap, score 5,3,1 points. Top point getter is the **Sprint King or Queen** in their category and wins the cash plus a Rio Grande gift certificate.

Rules: All USAC rules apply. **Centerline Rule will be strictly enforced! Stay to the right or stay home!** If no painted centerline marking exists, riders must keep to the right side, leaving a clear passing lane to their left at all times, regardless of weather or road conditions. All roads are open to traffic. **Obey and respect all police officer, officials, and volunteer requests.** Prizes must be claimed the day of race. USAC release waiver must be signed by all racers or parent/guardian for anyone 18 years or younger. Gear restrictions apply to all juniors (15-18). See USAC Rule 114. **HELMETS REQUIRED.** Race will only be cancelled due to weather conditions that may be dangerous to riders.



Bicycle Racing
Association of Colorado

USAC permit # 2015-503
Chief Referee Marco Vasquez



Thanks to our sponsors

RIO GRANDE
MEXICAN ★ RESTAURANT

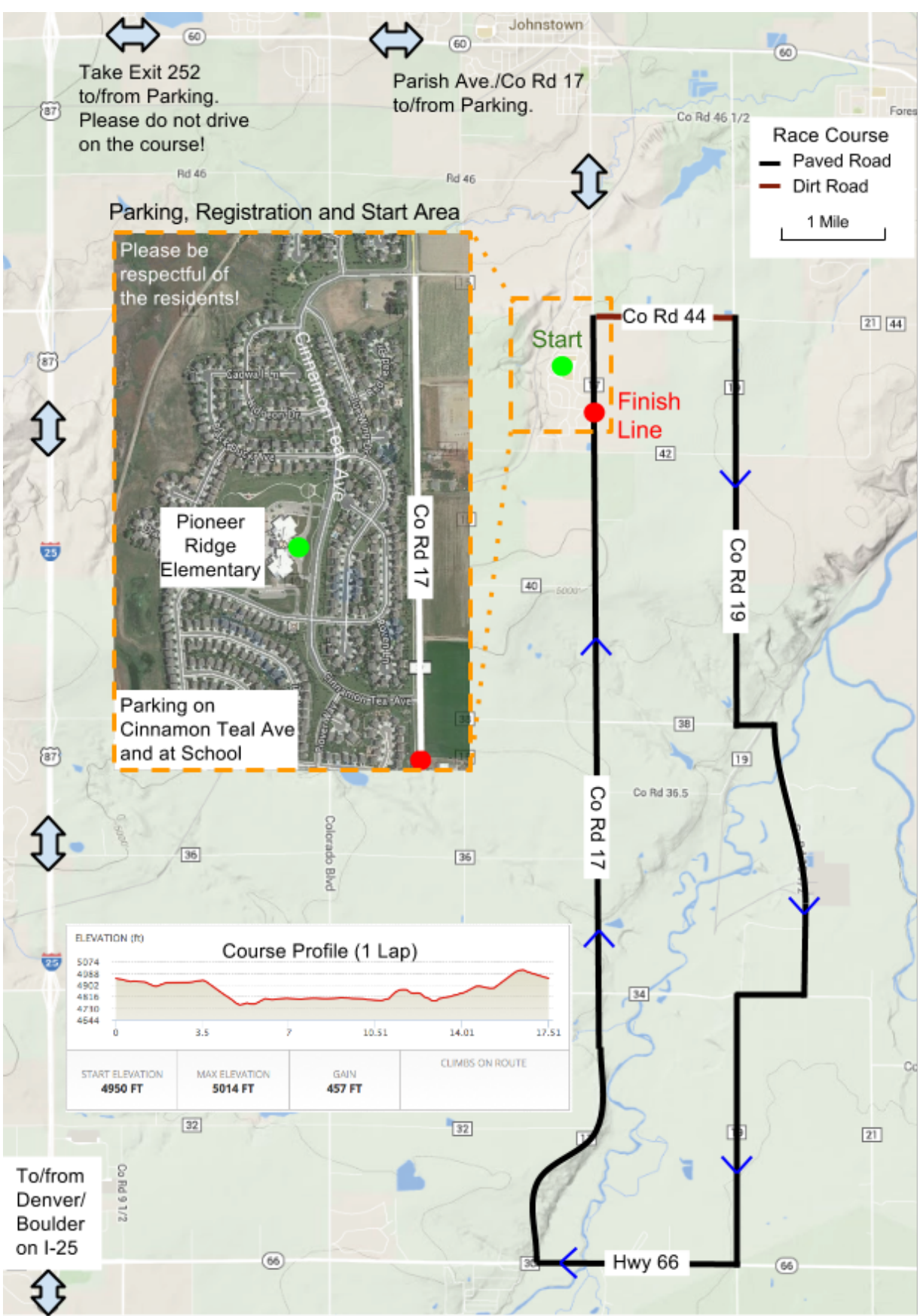
**BOULDER
PLASTIC
SURGERY**
WINFIELD HARTLEY, MD
HANS KUISLE, MD

EXCEL SPORTS



Rhonda Mansell
Certified MAT Specialist
720-883-4901 Rhonda@Matjournal.com





Directions to Parking: Take exit 252 off I-25 and follow Hwy 60/W South 1st St. east to town of Johnstown. Turn south on Parish Ave./County Road 17 and then west on Cinnamon Teal Ave. Parking will be at Pioneer Ridge Elementary School and on Cinnamon Teal Ave. (see map). No alcohol or tobacco on school grounds.

For more information, contact Eric Ray or Stephen Haydel at RoadRace@CyclingEvents.com