



COLORADO STATE UNIVERSITY



Rams Circuit & Oval Criterium Race

March 21-22, 2015

USAC Permit: 2015-1023 Chief Referee: Tim Madden

Circuit Road Race

Date: Saturday, March 21

Parking: Turnberry Road, between County Road 56 & Douglass Road, Fort Collins

Category	Start Time	Distance (Miles)	Laps	Field Limit	Prize	Registration
Collegiate Mens C	8:00am	24	4	75	Points	\$25
Collegiate Womens B	8:05am	24	4	75	Points	\$25
Collegiate Womens C	8:10am	18	3	75	Points	\$25
Collegiate Mens A	9:25am	54	9	75	Points	\$25
Collegiate Mens B	9:30am	42	7	75	Points	\$25
Collegiate Womens A	9:35am	42	7	75	Points	\$25
Mens Cat 5	11:50am	18	3	75	Medals/3	\$35
Womens Cat 4	11:55am	18	3	75	Medals/3	\$35
Mens Masters 40+ Cat 3	1:00pm	42	7	75	Medals/3	\$35
Mens Cat 4	1:05pm	36	6	75	Medals/3	\$35
Mens Masters 40+ Cat 4	1:10pm	36	6	75	Medals/3	\$35
Mens Pro1-2	3:00pm	66	11	100	\$250/ Top3	\$35
Womens Pro1-2-3	3:05pm	48	8	75	\$250/ Top3	\$35
Mens Cat 3	3:10pm	54	9	75	Medals/3	\$35

CRITERIUM

Date: Sunday, March 22

Location: CSU Oval, Fort Collins

Category	Start Time	Duration (Mins)	Field Limit	Prize	Registration
Collegiate Womens C	8:00am	25+clinic	75	Points	\$25
Collegiate Mens C	8:50am	25+clinic	75	Points	\$25
Collegiate Womens B	9:40am	25	75	Points	\$25
Collegiate Mens B	10:30am	45	75	Points	\$25
Collegiate Womens A	11:30am	45	75	Points	\$25
Collegiate Mens A	12:30pm	60	75	Points	\$25
Kids race (8 & under)	1:40pm	1 lap	75	Ribbons	Free
Mens Cat 4-5	2:00pm	40	75	Medals/3	\$35
Womens Cat 4	2:50pm	40	75	Medals/3	\$35
Mens Cat 3	3:45pm	50	75	Medals/3	\$35
Womens Cat Pro1-3	4:45pm	50	75	\$250/ Top3	\$35
Mens Pro1-2	5:45pm	60	100	\$250/ Top3	\$35

Rules

All USAC Rules Apply including junior gear and bike restrictions.

Circuit Race: Centerline Rule, Feed Zone (available for races longer than 45 mi) and discard zones in effect

No support on the road – Bring spare & pump.

Wheel pit at start – Wheels In-Wheels Out

Criterion: Free lap rule in effect.

Wheel pit at start- Wheels In- Wheels out

LICENSE/MEMBERSHIP

Non-collegiate Races: USAC license required. USAC 1-day license- \$15, only for Cat 5 men and Cat 4 Women, only onsite who have previously not held a USAC license with a higher category. BRAC Annual membership recommended to avoid BRAC 1-day membership fee (\$5). 1-day BRAC membership exempt with USAC 1-Day. Annual BRAC membership available at www.coloradocycling.org

Collegiate riders entering non-collegiate races must have a USAC license.

Collegiate Races: USAC Collegiate license required. Collegiate 1-day (\$15) only available onsite for B and C races. Annual USAC Collegiate licenses available online at www.usacycling.org/register

Registration

Online Registration- Can be found on the USAC website here www.usacycling.org/register/2015-1023

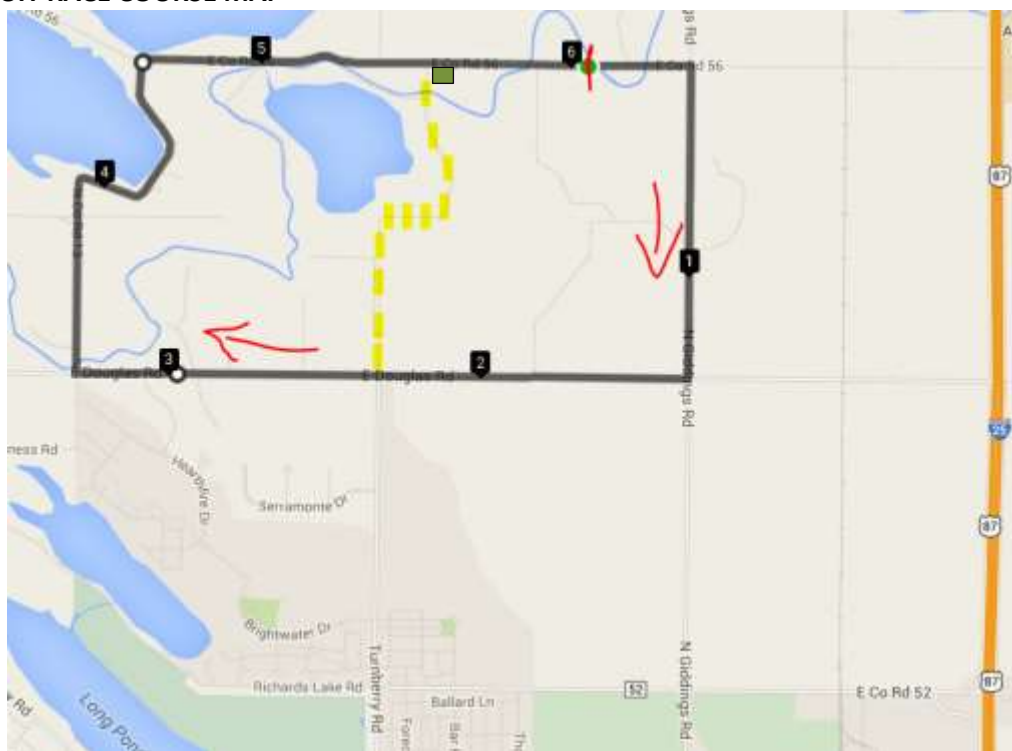
Race day registration- Will take place at the registration tent near the start. Opens at 8:00 am and closes 40 minutes before the start of each category, Entry fee includes USAC Surcharges.

BRAC Juniors may race in their respective senior category for Free.

Questions:

Paul Kumm Pakumm@gmail.com 719-452-9159

CIRCUIT RACE COURSE MAP



Course Description

6 mile flat to gentle slopes, with Giddings Rd (eastern road) and Douglass Rd (south road) paved and Co Rd 13 (western road) and Co 56 (northern road) are dusty gravel until a paved inclined sprint finish. (25c to 28c tires preferred)

Directions

Take I-25 to exit 271, head west on County Rd 50/Mountain Vista Dr then turn North on Turnberry Rd. Parking will found on Turnberry (highlighted section) after the Douglass Rd intersection. Drive north until parking Volunteer directs you (parking is free).

ATTENTION!!

By respectful request by the Residents of the Circuit Course

Please do not bring groups bigger than 3 to ride & recon the course before the event

Please use the Port-a-potties (they're there for a reason)

Please do not litter

Please do not disturb pets and animals