

# CLASICA DE RIO GRANDE

Same Longer Course!  
More Burritos!

(formerly known as Weld County Road Race)

PRESENTED BY

RallySport  
Cycling Team

& **RIO GRANDE** &  
MEXICAN ★ RESTAURANT

Team Rio  
Grande Racing



**Johnstown, Colorado**

**Saturday, 4/23/2016**

Online Pre-Registration Only! [www.CyclingEvents.com/RioRR](http://www.CyclingEvents.com/RioRR) - Registration Closes – Friday 4/22 at Noon

## Same Long Course for 2016

A 17.5 mile loop on rolling paved roads except for one mile of straight dirt road. Sag wagon only, no mechanical support. Bring stuff to fix a flat.

Rio Grande Mexican food truck will be at Registration/Start area! Lots of Rio prize GCs!

## Registration

- On-line registration only at <http://www.cyclingevents.com/RioRR> until April 22nd at noon. **NO Race Day Registration!** USAC insurance, LA Operational surcharges and online registration fees are included in entry fee. Number pick up located at Pioneer Ridge Elementary School (see map).

- **USAC license required.** USAC 1-Day beginner license is \$10, only available on site for Cat 5 men, Cat 4 women and juniors who have never had a USAC license with a higher category. Can **only** be purchased online at [www.usacycling.org/events/?state=CO](http://www.usacycling.org/events/?state=CO), select appropriate event, then click on Purchase One-Day License. Bring receipt to race.

- **BRAC annual membership recommended** to avoid BRAC 1-Day membership (\$5) on race day. (BRAC 1-Day membership exempt with USAC 1-Days and Out-of-State riders). Annual USAC licenses and BRAC memberships available online at [www.usacycling.org](http://www.usacycling.org). **No refunds.**

- Juniors race for \$15 in junior categories (must have USAC license)! **U23 racers get \$15 off entry fee!** Results will be posted at registration area and not the finish line.

| Category                 | Start Time | Laps | Length (miles) | Prizes/Places                        | Field Limit | Fee  |
|--------------------------|------------|------|----------------|--------------------------------------|-------------|------|
| MM 50+ 1-2-3             | 9:00 am    | 3    | 52.5           | Merch/3 + \$40*                      | 80          | \$42 |
| MM 40+ 4                 | 9:04 am    | 3    | 52.5           | Merch/3                              | 80          | \$42 |
| MM 50+ 4                 | 9:08 am    | 3    | 52.5           | Merch/3                              | 80          | \$42 |
| SM 5 (<40)               | 9:12 am    | 2    | 35             | Medals/3                             | 50          | \$42 |
| SM 5 (40+)               | 9:16 am    | 2    | 35             | Medals/3                             | 50          | \$42 |
| JM/JW 15-16/13-14        | 9:20 am    | 2    | 35             | Medals/3 each                        | 40          | \$15 |
| MM 60+/70+               | 9:24 am    | 2    | 35             | Merch/3 each                         | 75          | \$42 |
| SM Pro-1-2               | 12:10 pm   | 4    | 70             | \$640/8 + \$80*                      | 80          | \$42 |
| MM 40+ 1-2-3             | 12:14 pm   | 4    | 70             | \$200/3 + \$50*                      | 80          | \$42 |
| SM 3                     | 12:18 pm   | 3    | 52.5           | \$150/3 + \$40*                      | 80          | \$42 |
| MM 40+ 3                 | 12:22 pm   | 3    | 52.5           | \$150/3 + \$40*                      | 80          | \$42 |
| SM 4/JM 17-18            | 12:26 pm   | 3    | 52.5           | Merch/3, Medals/3                    | 75          | \$42 |
| SW Pro-1-2/SW 3/MW 40+   | 12:30 pm   | 3    | 52.5           | \$250/5 + \$50*,<br>Merch/3, Merch/3 | 75          | \$42 |
| SW 4/MW 50+/60+/JW 17-18 | 12:33 pm   | 2    | 35             | Medals/3 each                        | 75          | \$42 |

\*For select categories the top 3 across the finish line each lap, including the finish lap, score 5,3,1 points. Top point getter is the **Sprint King or Queen** in their category and wins the cash plus a Rio Grande gift certificate.

**Rules:** All USAC rules apply. **Centerline Rule will be strictly enforced! Stay to the right or stay home!** If no painted centerline marking exists, riders must keep to the right side, leaving a clear passing lane to their left at all times, regardless of weather or road conditions. All roads are open to traffic. **Obey and respect all police officer, officials, and volunteer requests.** Prizes must be claimed the day of race. USAC release waiver must be signed by all racers or parent/guardian for anyone 18 years or younger. Gear restrictions apply to all juniors (13-18). See USAC Rule 114. **HELMETS REQUIRED.** Race will only be cancelled due to weather conditions that may be dangerous to riders.



Bicycle Racing  
Association of Colorado

USAC permit # 2016-447



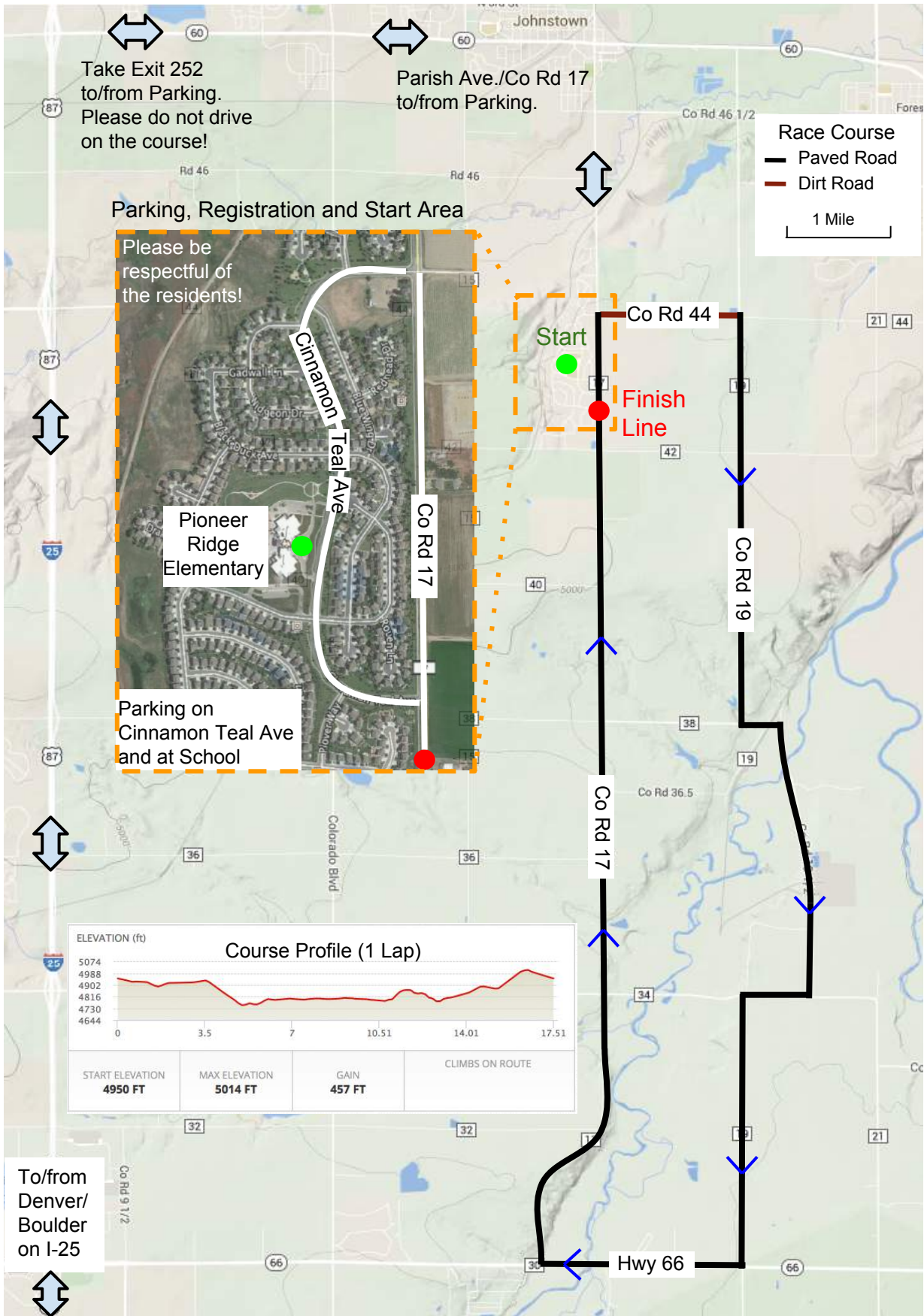
Thanks to our sponsors

**RIO GRANDE**  
MEXICAN ★ RESTAURANT

**BOULDER  
PLASTIC  
SURGERY**  
WINFIELD HARTLEY, MD  
HANS KUISLE, MD

**MAT**  
MUSCLE  
ACTIVATION  
TECHNOLOGIES  
**Rhonda Mansell**  
Certified MAT Specialist  
731-983-4965 | [Rhonda@MatJournals.com](mailto:Rhonda@MatJournals.com)





Take Exit 252 to/from Parking. Please do not drive on the course!

Parish Ave./Co Rd 17 to/from Parking.

**Race Course**  
 — Paved Road  
 — Dirt Road  
 1 Mile

**Parking, Registration and Start Area**

Please be respectful of the residents!

Cinnamon Teal Ave

Pioneer Ridge Elementary

Parking on Cinnamon Teal Ave and at School



To/from Denver/Boulder on I-25