



CSU CYCLING SPRING WEEKEND

Cobb Lake Road Race and The Oval Criterium

Collegiate Dual Conference Race Weekend (RMCCC and NCCCC)

Hosted by Colorado State Rams Cycling with the support of 9Seventy Racing

Cobb Lake Road Race (March 17 th)						
Category	Start Time	Distance	Laps	Prize	Entry Fee	Field Limit
Collegiate Mens C	8:00 AM	27	3	USAC Points	\$25	75
Collegiate Womens B	8:05	27	3	Points	\$25	75
Collegiate Womens C	8:10	20	2	Points	\$25	75
Collegiate Mens A	10:00	67	8	Points	\$25	75
Collegiate Mens B	10:05	43	5	Points	\$25	75
Collegiate Womens A	10:10	43	5	Points	\$25	75
Mens P/1/2	1:00	67	8	\$250/3	\$35	100
Mens Cat 3	1:05	58	7	Prizes/3	\$35	100
Womens Open	1:10	43	5	\$250/3	\$35	75
Mens Cat 1/2/3 40+	4:00	51	6	Prizes/3	\$35	100
Mens Cat 4/5	4:05	43	5	Prizes/3	\$35	75
Mens Cat 4/5 40+	4:10	43	5	Prizes/3	\$35	75
The Oval Criterium (March 18 th)						
Collegiate Mens C	8:00 AM	25 mins + clinic		USAC Points	\$25	75
Collegiate Womens B/C	8:50	30 mins + clinic		Points	\$25	75
Collegiate Mens B	9:45	45 mins		Points	\$25	75
Collegiate Womens A	10:45	45 mins		Points	\$25	75
Collegiate Mens A	11:45	60 mins		Points	\$25	75
Kids Race	1:00	1 Lap		Medals/3	FREE	75
Mens Cat 4/5	1:15	40 mins		Prizes/3	\$35	75
Womens Cat 4/5	2:10	40 mins		Prizes/3	\$35	75
Mens Cat 3	3:05	45 mins		Prizes/3	\$35	100
Womens Pro 1/2/3	4:05	50 mins		\$250/3	\$35	100
Mens Pro 1/2	5:10	60 mins		\$250/3	\$35	100

Help and Information

Please contact csuramscycling@gmail.com or contact the race director at (719) 351-3474.

Registration – PLEASE PREREG ONLINE

Please register online through the link here (Opens Feb 1st): [LINK](#)

If you do two races in one day, additional race price: \$10

Day of Registration for Non-Collegiate Categories – Entry Fee increases \$5

Day of registration will take place at the registration tent near the start. We will open at 7:00 am and close 40 minutes before the start of each category, Entry fee includes USAC Surcharges.



QUALITY SERVICE TRUST SINCE 1963



Rules

All USAC Rules apply including junior gear and bike restrictions.

Circuit Race: Centerline Rule, Feed Zone (available for races longer than 45 mi) and discard zones in effect. **No support on the road – Bring spare & pump.** However, there will be a wheel pit at the finish line – Wheels in, wheels out.

Criterion: Free lap rule in effect until 5 laps to go in each field. Wheel pit at start - Wheels in, wheels out.

License and Membership

USAC races: USAC license required. USAC 1-day license is \$10, only for Cat 5 men and women. BRAC Annual membership recommended to avoid BRAC 1-day membership fee (\$5). BRAC membership exempt with USAC 1-Day and out-of-state riders. Annual BRAC membership available at www.coloradocycling.org

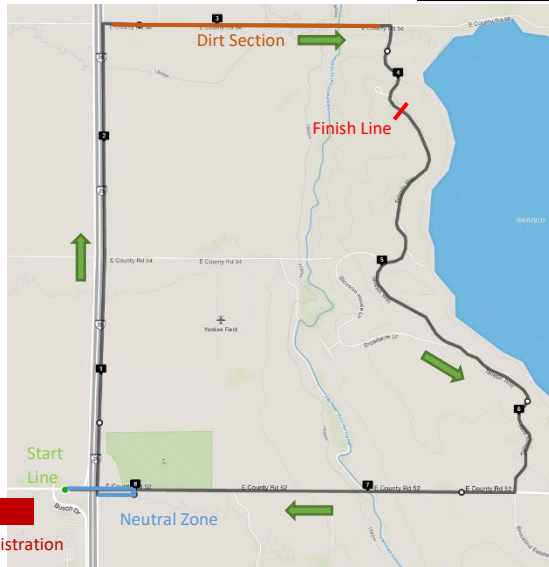
Collegiate riders entering non-collegiate races must have a USAC license.

Collegiate Races: USAC Collegiate license required. Collegiate 1-day (\$10) only available onsite for B and C races.

Annual USAC Collegiate licenses available online at www.usacycling.org/register

Juniors (racing age 18 & under) race free in their categories! Please use the coupon code “junior”

Cobb Lake Circuit Race Information:



Parking and Registration

Event Parking and Registration for Cobb Lake will be at the Budweiser Headquarters Just west of the Richards Lake Rd and Busch Drive intersection in the North Construction Parking Lot. Please exit I-25 at the Mountain Vista Exit, then head North on Giddings Rd, then east on Richards Lake Rd to reach the parking lot.

Neutral Zone

There will be a neutral start (highlighted in blue) from the green dot (start line) until you turn right a second time, heading north on the frontage road. Racing begins on the frontage road.

Lap Count

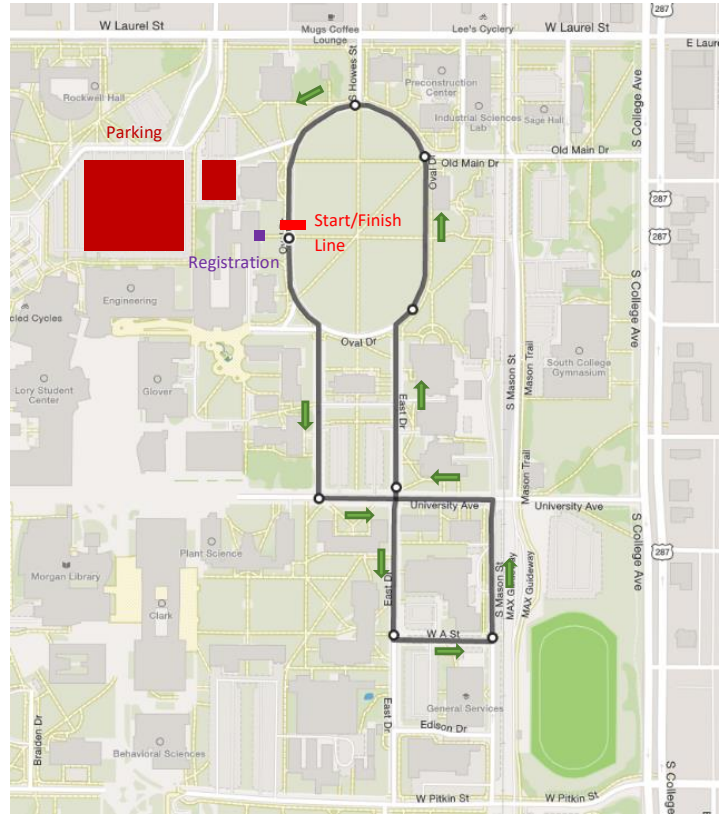
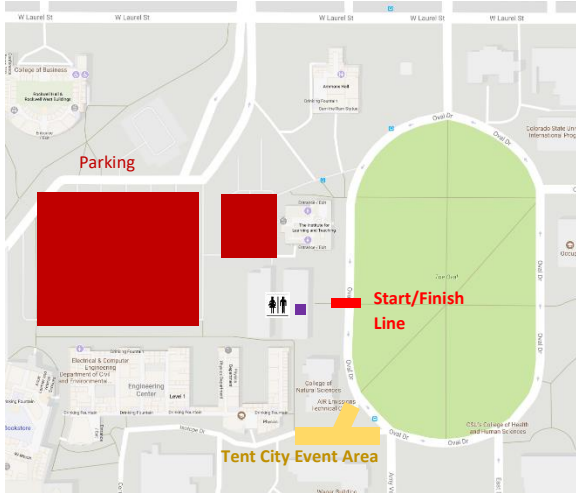
Since the start is on the opposite end of the course from the finish (Red Line), when you cross the finish line for the first time, your lap count will be (Example: if your field races 5 laps, it will actually be 5.5 laps total).

Race Profile (1 lap with 0.3 mi neutral zone):



Oval Criterium Race Information:

Zoomed In Event Area Map:



Parking

To get to parking, Exit I-25 at the Mulberry Exit. Head west until you reach College Ave and turn south (left turn). Take College Ave to Laurel St and turn west (right turn). At the third light, take a left. Parking will be in the parking lot just North of the CSU Engineering Building.

Registration

This will be next to the start/finish line on the Oval inside the Weber Building, just east of the parking lots.

Help Volunteer!

If you would like to help volunteer for this race weekend, please go to: [LINK](#)

Thank you for being a part of and supporting the Colorado State University Cycling Club!!

USAC Permit Number 2018-323

